



Neighborhood Area Planning

Deborah Munkberg
September 2018

Neighborhood Area Planning Program

- Based on Comprehensive Plan
- Strategic, action-focused
- Ground-up community process





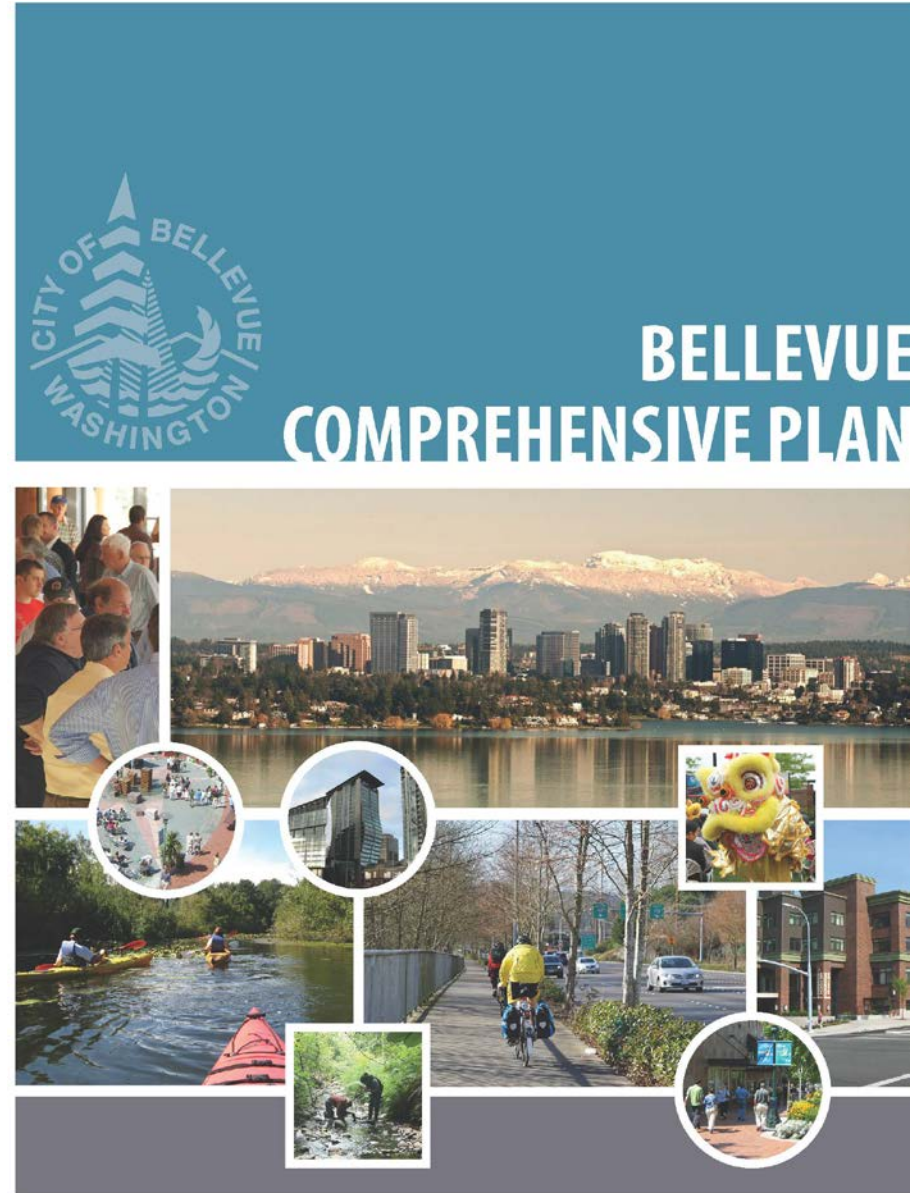
**Neighborhood plans:
will be based on and part of
our Comprehensive Plan**

Relationship to Comprehensive Plan

Comprehensive Plan
Volume 1

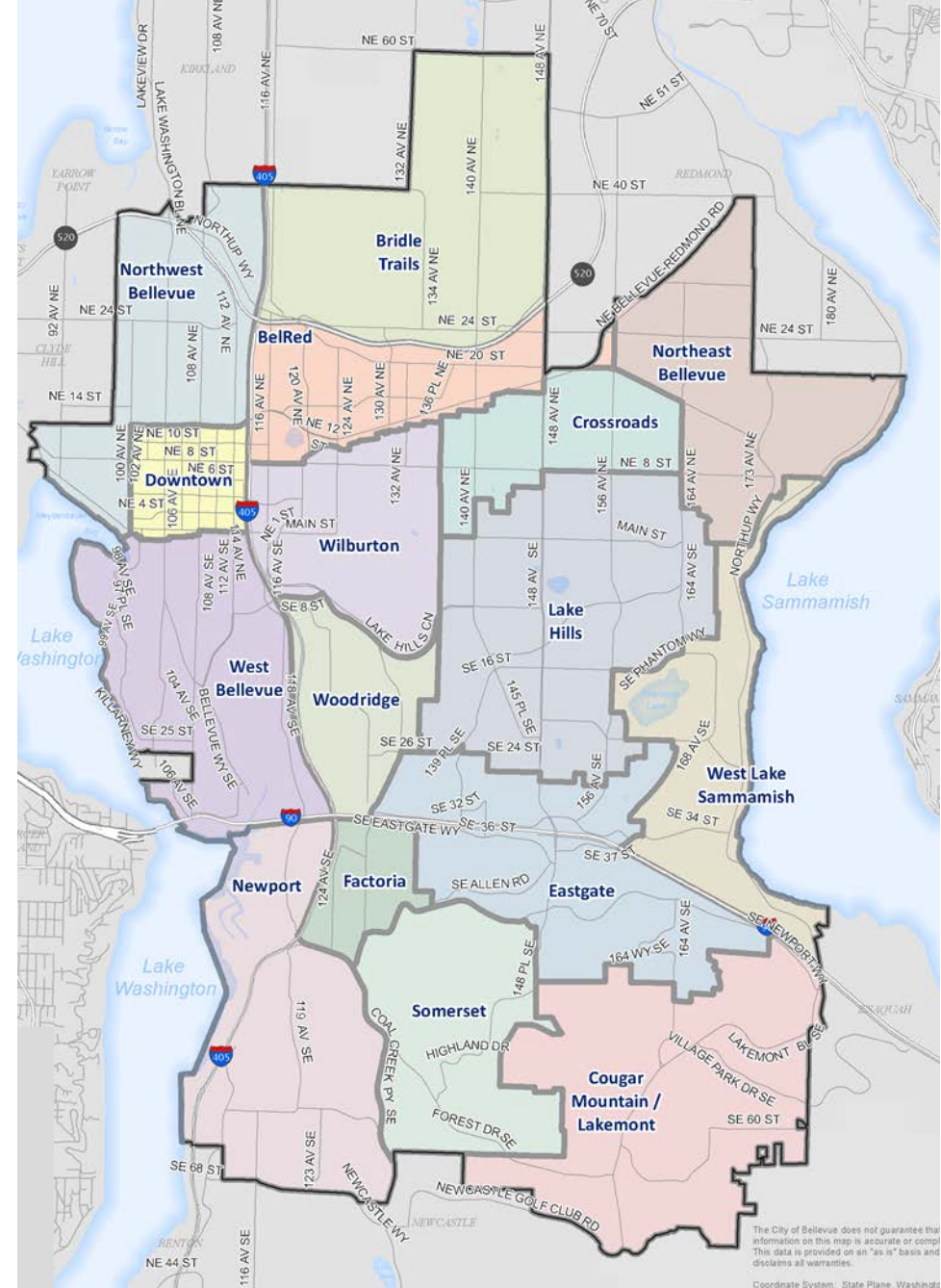
Neighborhood
Area Plans
CP Volume 2

Land Use
Regulations



Neighborhoods Element

- Establishes 16 neighborhood areas
- Articulate vision
- Strategies for adapting to change while preserving what is valued

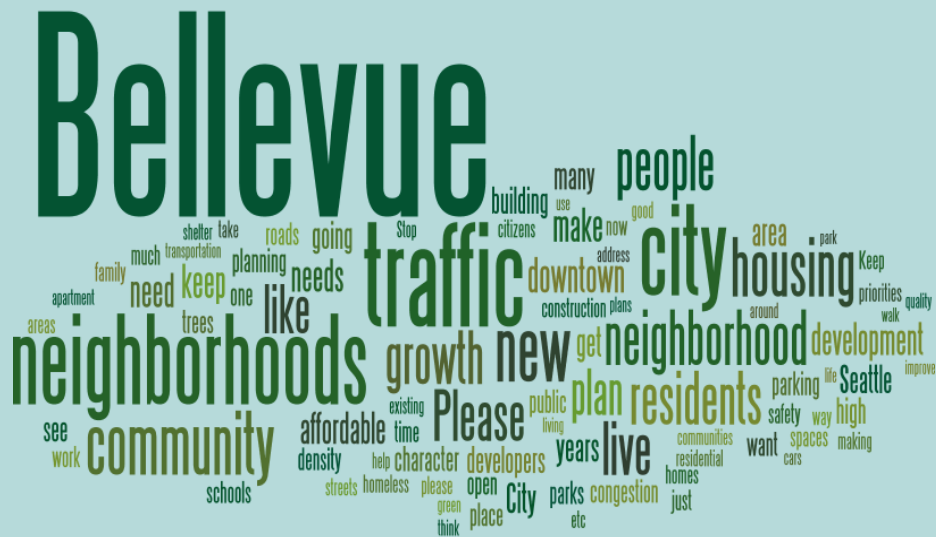


A large group of people is seated at tables in a community meeting or public hearing. The scene is partially obscured by a large teal overlay that contains white text. In the foreground, a white woven basket with wooden handles sits on a table. A coffee cup is also visible on the table. The background shows many people engaged in conversation or listening.

**Neighborhood plans:
will be strategic and future-focused**

What will be in the plans?

- Community profile
- Opportunities map
- Relationship to Comprehensive Plan
- Vision and strategies



Vision and Strategies

Community Gathering Places



Neighborhood centers are places with concentrations of businesses and services, housing, gathering places and green spaces that provide residents with options to live a healthy, active lifestyle. In neighborhood centers, getting around by walking, biking or wheelchair is safe, attractive and convenient; and access to high-quality transit and protected bikeways make it easy to get to the rest of the city and region.

When services and other destinations are clustered in compact areas, economic viability is strengthened, and walking, transit and bicycling become more practical. As a result, other elements of a complete community are supported and more people will have easier access to centers of community life and activity, and they will serve as anchors for 20-minute living.

Neighborhood centers include:

- Neighborhood businesses and services
- Quality, affordable housing
- Healthy and affordable food
- Active transportation — walking, biking and transit

Comprehensive Plan Policies

▶	Promote maintenance and establishment of small-scale activity areas within neighborhoods that encourage pedestrian patronage and provide opportunities...
▶	Support neighborhood efforts to maintain and enhance their character and appearance.
▶	Help communities to maintain their local, distinctive neighborhood character, while recognizing that some neighborhoods may evolve.
▶	Encourage development of amenities, services and facilities that are supportive of all types of families through investment, incentives...
▶	Encourage development of high-quality, well-designed housing in and around neighborhood centers and near transit — at a variety of sizes and cost ranges.

Action Plan

Related Action Areas	Actions	Partners
	Central City planning: Complete the Central City 2035 Plan to enhance the role of the central city within the Healthy Connected City network and to expand opportunities for Central City neighborhoods to develop as complete communities.	BPS, PBOT, BES, PP&R, PDC, O&WR, PWB, PHB
	Broadband in neighborhoods: Identify and create several high-capacity broadband access points in neighborhood centers. Improve and expand free Wi-Fi access at publicly-owned and accessible buildings, such as schools and libraries.	OCT, School Districts
	Quality, affordable housing: Complete the citywide housing strategy and use it as a basis for regulations, location policies, incentives and public-private partnerships that help locate new well-designed, energy efficient, affordable housing in service-rich, transit-accessible locations in and around neighborhood hubs. <ul style="list-style-type: none"> Explore opportunities to create housing for older adults and mobility-impaired residents in service-rich, accessible locations; and ensure that workforce housing is part of the mix of housing in neighborhood hubs. As an initial project, construct and include workforce and senior housing in the Gateway-Glisan mixed-use/mixed-income housing development. 	PHB, BPS
	Transit and active transportation: Identify barriers to pedestrian and bicycle access to and within neighborhood centers, develop priorities for investment, and implement policy changes and funding to ensure hubs have safe and convenient pedestrian and bicycle connections.	PBOT

DOES YOUR NEIGHBORHOOD INCLUDE WALKABLE ACCESS TO A PARK 🌳, SCHOOL 🎒, TRANSIT 🚗 & HEALTHY FOOD 🍎?



Outcomes

- Strategies and actions
- Neighborhood-based actions
- Inform future Comprehensive Plan updates
- Sense of ownership



A group of people is gathered around a table, looking at a large map or plan. The scene is partially obscured by a teal overlay containing text. The text reads:

**Neighborhood plans:
will be completed in about a
one-year time frame**

Work Program

Neighborhood Area Planning
Phases of work

Jun Jul Aug Sept Oct Nov Dec Jan Feb Mar Apr May

Project Initiation
Start-up activities

Phase 1 Discovery
Share information and identify priorities

Phase 2 Develop and refine strategies
Strategic solutions and actions

Phase 3 Review and validation
Share strategies and resolve issues

Phase 4 City review and action
legislative process, hearings and action



A photograph of several people in a meeting, with a teal overlay containing text. The background shows a group of people, including a woman in a purple top and a man in a dark jacket, engaged in conversation. The text is centered on the teal overlay.

Neighborhood plans:
depend on a collaborative
relationship between the city
and residents

Neighborhood Engagement

- Grass roots
 - Neighborhood associations, community groups, faith networks, business, schools
- In person, In neighborhood
- In-person and online engagement
- Neighborhood workshops
 - Trained citizen facilitators



Key Audiences

- Broad and targeted outreach
- Ethnic and cultural groups
- Language
- Millennial generation
- Families with young children
- Renters
- New residents



Engagement tools

- Online
 - EngagementHQ
 - Social media
 - Mobile apps
- Meetings and activities
 - Community-wide workshops
 - Discussion circles
 - Interest groups
 - Tactical urbanism



Additional Engagement Tools

- Arts and artists
- Virtual reality exercise
- StoryCorps/TED talks
- Storefront/planner in the neighborhood
- Walking tours
- Neighborhood photographs
- Neighborhood events
- Schools/youth participation
- Meeting in a box



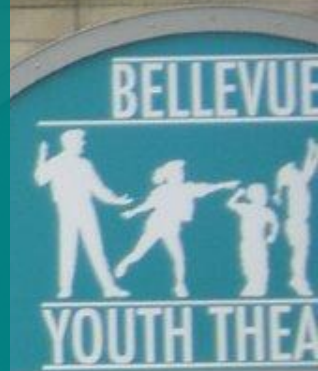


**Neighborhood plans:
will be organic, fun and
informative**

2018 - 2019

Northeast Bellevue

Northwest Bellevue



Northeast Bellevue

10,500 persons

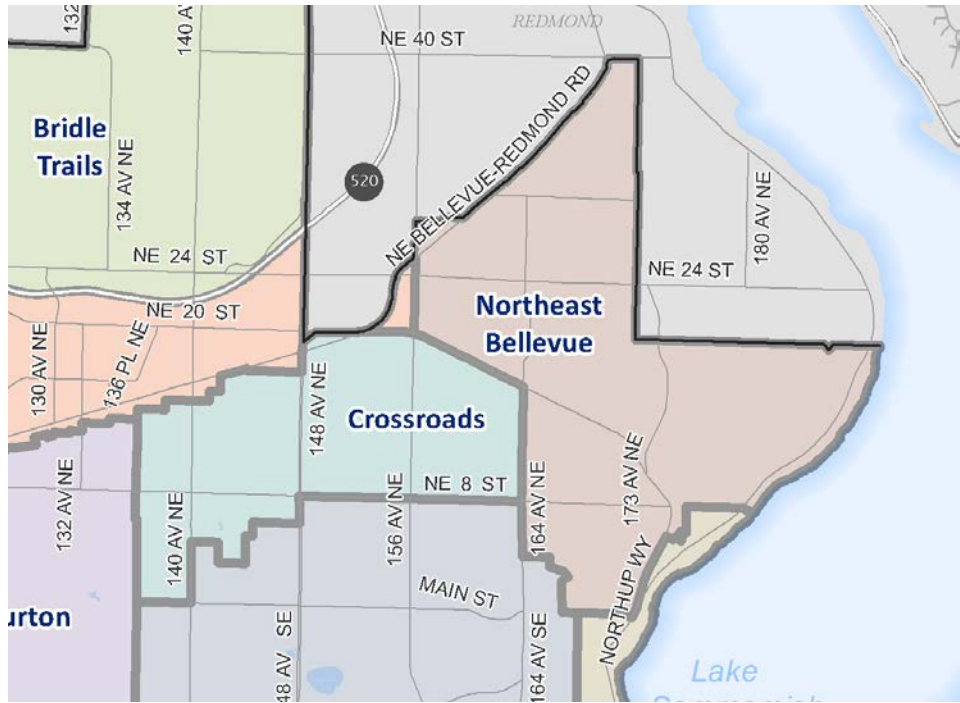
1,413 acres

Diverse and multilingual
population

Balanced age distribution

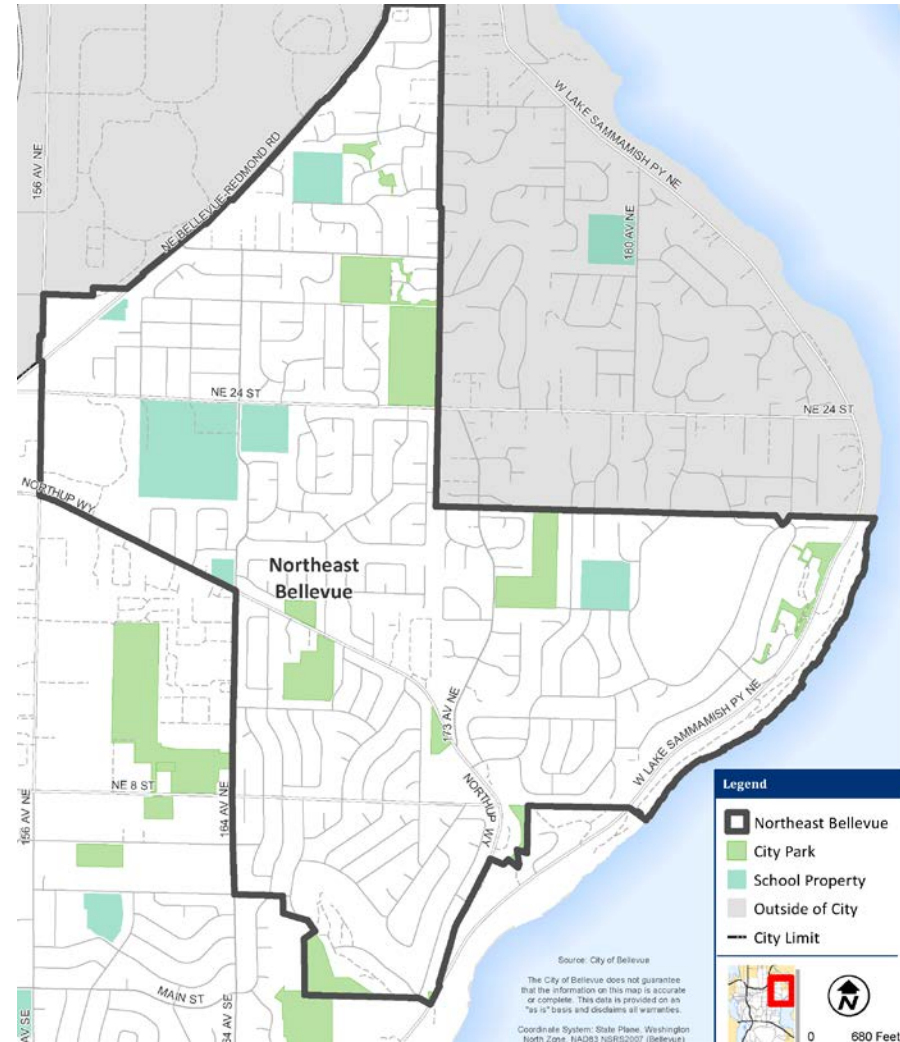
18% renters

94% single family homes



Parks in Northeast Bellevue

- 77** acres parks & open space
- 3.3** miles trails
- 67** acres public schools/libraries
- 58%** households within 1/3 mile walking distance of park/trail entrance
- 11%** households within 1/3 mile walking distance of school grounds



Northwest Bellevue

9,200 persons

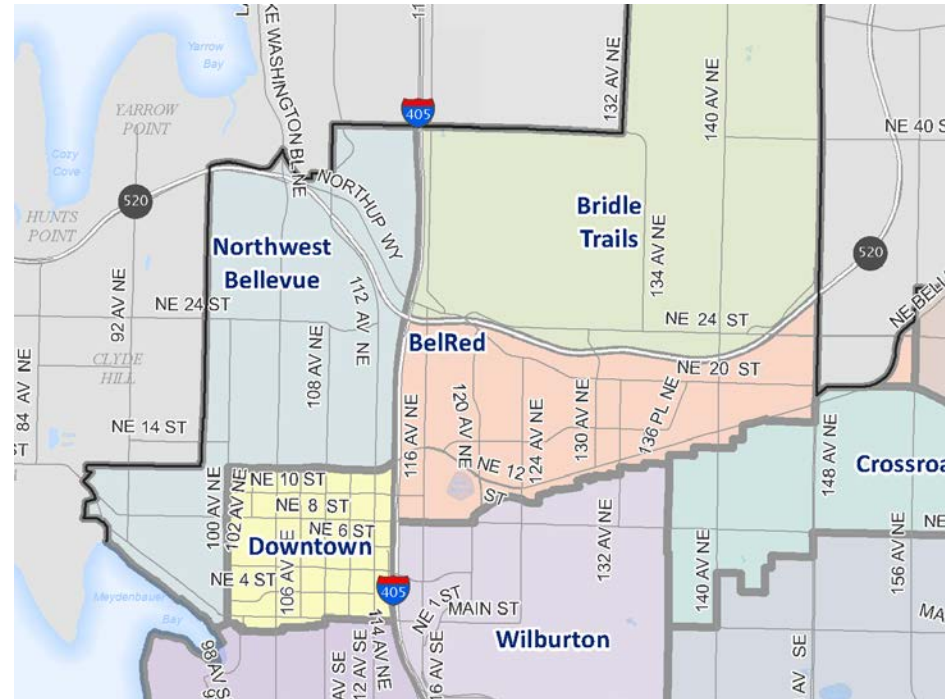
1,323 acres

Diverse and multilingual
population

Balanced age distribution

38% renters

56% single family homes



Parks in Northwest Bellevue

- 48** acres parks & open space
- 3.2** miles trails
- 0** acres public schools/libraries
- 77%** households within 1/3 mile walking distance of park/trail entrance
- 2%** households within 1/3 mile walking distance of school grounds

